

JUNE 2025

# Wize Alliance: Connecting 18M sensors



Founded in 2017 by GRDF, Suez and Sagemcom, Wize Alliance is an open and non-profit international association.



Promote the use and benefits of a **proven** and **industrial technology** with a guaranteed **durability until 2045**



**Export Wize technology** to penetrate **new markets** related to **industrial IoT** and **smart cities**



**Participate in standardization work** on the CEN/TC 294 European standard. *In 2018, European Standardization Committee (CEN) agreed to the participation of WIZE Alliance in CEN/TC 294.*



**Identify and coordinate a network** of utilities, industrial players, start-ups, equipment manufacturers to provide a wide range of **Wize compliant products**

# WIZE Alliance is leveraging over ten years' experience of field deployments

**+18 million**  
*devices deployed*

**500 cities**  
*in 15 countries*

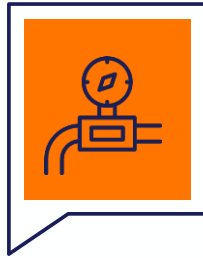
**+12**  
*years deployment*

*Urban, semi-urban and rural  
areas*



# Wize Alliance aims to export the technology and enter new markets

## *Industrial Internet of Things Applications*



**METERING**



**SMART CITIES**



**WASTE  
MANAGEMENT**



**CONNECTED  
FACTORY**

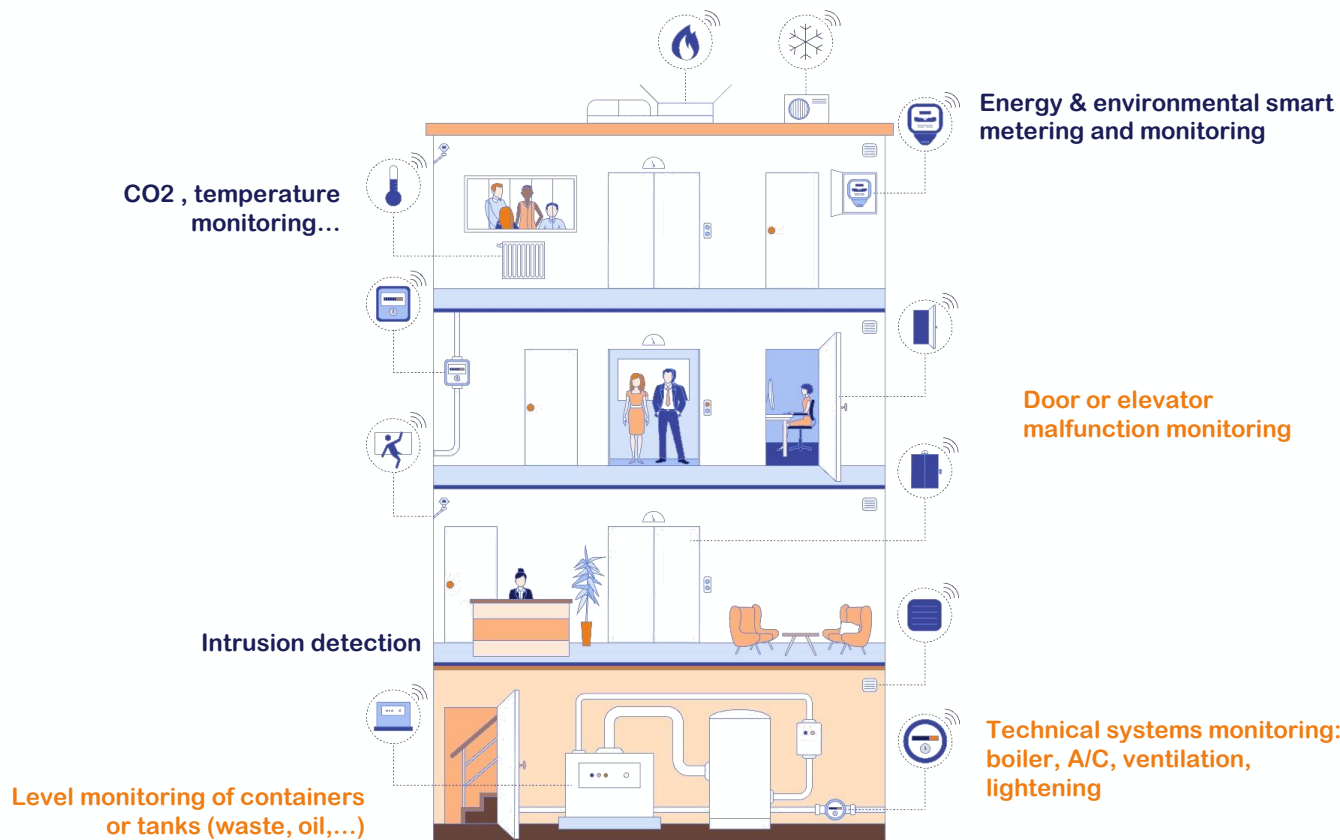


**RENEWABLES**

# Wize technology use cases



# Wize core use cases: technical building management in smart cities and industrial sites



# Wize promotes and develops proven solutions by and for the needs of utilities and industry



*Large volume of objects*



*Constraint of accessibility of objects (buried objects)*



*Technology experienced in constrained industrial environments*



*Reliable and robust communication*



*Long range for low power consumption*



*Bi-directionality*



*Clean and license-free frequency band (169MHz in Europe with few occupancy of the spectrum)*



*Open: Communication Technology (EN13757)*



*License-Free RF chip Manufacturing*



**18 million**  
meters deployed



**500 cities**  
in 15 countries



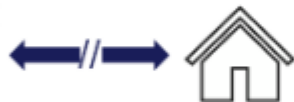
**2005**  
12 y. experience

Networks deployed in France, Spain, Malta, the UK, Portugal and pilots in China, Singapore, Chile, Indonesia, Colombia

## The Wize protocol offers the best radio network efficiency with the lowest number of concentrators



Lower frequencies have better penetration



Lower data rates allow better range



Lower time of communications increases battery life



# Over 40 companies have already joined the Alliance

## Executive



## Active



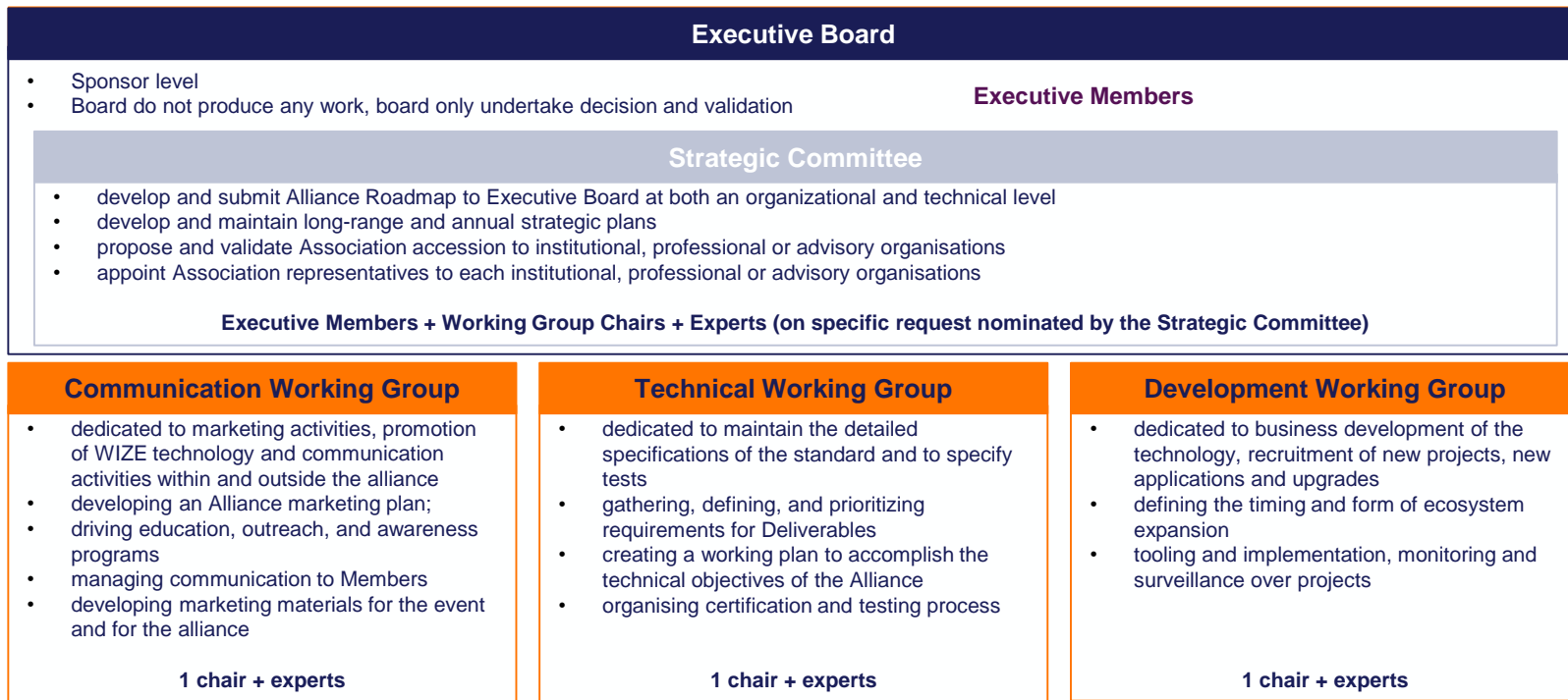
## Regular



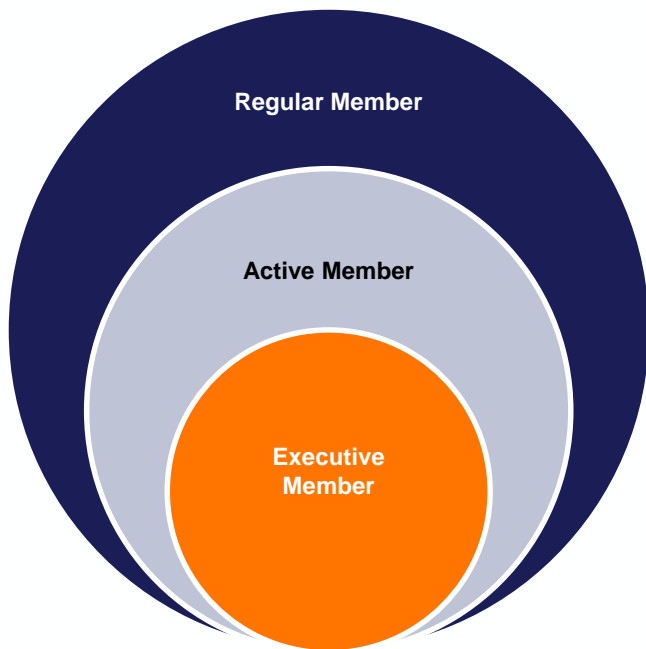
## Start-up & Academics



# Governance relies on a board which undertake decisions and Committees which produce work and deliverables.



# WIZE Alliance is structured around three levels of membership



## 1. Executive Member

30 k€ //year

- Players with ongoing deployments of products / services or existing networks
- Active contributors to technology evolution strategy
- Serve on the Executive Board, Participate in Working Groups
- Validate Deliverables

## 2. Active Member

10 k€ / year

- Players with compatible services or products
- Active contributors to operational activities
- Participate in Working Groups
- Contribute to Deliverables

## 3. Regular Member\*

3 k€ / year

- Players with interest in the technology
- Specific contributors to operational activities
- Access to specifications

\* Free of fees for academics and start-ups

# Members Rights

Rights	Executive	Active	Regular
Eligibility for a seat on the Executive Board	●		
Initiate Working Group	●		
Chair Working Group	●	●	●
Participate in General Assembly	●	●	●
Vote in general assembly	●	●	●
Submit Deliverables for final approval by the Executive Board	●		
Contribute and access to draft Deliverables	●	●	
Access to Wize final Deliverables	●	●	●
Have certified Wize compliant products	●	●	●
Participate in press articles and interviews regarding the Alliance	●	●	●
Access private area of the website dedicated to Members	●	●	●
Receive Alliance's communications	●	●	●

# THANKS

[www.wize-alliance.com](http://www.wize-alliance.com)

